

# RoHS Test Report

**O-cn-0921380**

PRODUCT DESCRIPTION			
	#1: 9403684815, Flute, dull gold = H-1003	<b>Product Name:</b> Headphones (6 models)	
	#2: 9404293001, BBS Bongo white = H-1002	<b>Applicant Name:</b>	ABC Electronic Importers. Inc.
	#3: 9104069474, pickup hot orange = H-1009	<b>Your reference number:</b>	ABC-123
	#4: 9403703252, Big pipe yellow= H-1006	<b>P/O number:</b>	PO12345
	#5: 0004068942, Maraca dark shadow= H-1008	<b>Country of origin :</b>	China
	#6: 9404078999, oboe Golden, Black= H-1001	<b>Manufacturer:</b>	China Electronics Company Inc.

TEST DESCRIPTION	
<b>Test Required:</b>	Screening test for elements (Lead, Mercury, Cadmium, Chromium and Bromine) as specified in the EU RoHS directive 2002/95/EC and its amendments – Restriction of the use of certain hazardous substances in electrical and electronic equipment.
<b>Test Method:</b>	X-ray Fluorescence Spectrometry(XRF) with reference to IEC62321 Ed.1
<b>Sample(s) were received on :</b>	2011-6-29
<b>Sample(s) were tested on:</b>	2011-7-1

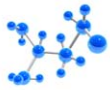
CONCLUSION
Passed

REMARKS
<ol style="list-style-type: none"> <li>1. Because of the technology of XRF screening, both Br and Cr are represented in a total level while the restricted substances are PBBs / PBDEs and Cr (VI) respectively.</li> <li>2. The test results are related only to the tested items.</li> <li>3. The report shall not be reproduced except in full without the written approval of AsiaInspection Ltd.</li> </ol>

**Signed for and on behalf of AsiaInspection Ltd.**

*For and on behalf of*  
 亞洲品質檢驗有限公司  
 AsiaInspection Limited  
  
 .....  
*Authorized Signature(s)*

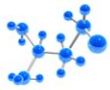
**Robert Molnar**  
**Lab Testing Manager**



Testing Details							
No.	Parts Description	Pb	Hg	Cd	Cr	Br	Result
		≤700ppm*	≤700ppm*	≤70ppm*	≤700ppm*	≤300ppm*	
#1-1	White soft rubber earplugs	WL	WL	WL	WL	WL	Comply
#1-2	Golden metal frame of speaker	WL	WL	WL	WL	N.A	Comply
#1-3	Silvery metal mesh of speaker	WL	WL	WL	WL	N.A	Comply
#1-4	Black soft rubber of speaker	WL	WL	WL	WL	WL	Comply
#1-5	Silvery metal frame of speaker	WL	WL	WL	WL	N.A	Comply
#1-6	Silvery magnet of speaker	WL	WL	WL	WL	N.A	Comply
#1-7	Small PCB with Soldering tin	WL	WL	WL	WL	Comply	Comply
#1-8	Double adhesive tape	WL	WL	WL	WL	WL	Comply
#1-9	Golden metal film	WL	WL	WL	WL	N.A	Comply
#1-10	White plastic of wire	WL	WL	WL	WL	WL	Comply
#1-11	Red enameled wire	WL	WL	WL	WL	WL	Comply
#1-12	Golden enameled wire	WL	WL	WL	WL	WL	Comply
#1-13	Blue enameled wire	WL	WL	WL	WL	WL	Comply
#1-14	White cotton thread	WL	WL	WL	WL	WL	Comply
#1-15	Golden metal contactor of plug	WL	WL	WL	WL	N.A	Comply
#1-16	Black plastic of plug	WL	WL	WL	WL	WL	Comply
#2-1	Red soft rubber	WL	WL	WL	WL	WL	Comply
#2-2	White inner	WL	WL	WL	WL	WL	Comply
#2-3	Black soft rubber	WL	WL	WL	WL	WL	Comply
#2-4	Black inner	WL	WL	WL	WL	WL	Comply
#2-5	Red thread	WL	WL	WL	WL	WL	Comply
#2-6	White sponge	WL	WL	WL	WL	WL	Comply
#2-7	Golden metal plug	WL	WL	WL	WL	N.A	Comply
#2-8	White plastic	WL	WL	WL	WL	N.A	Comply
#2-9	Red plastic of wire	WL	WL	WL	WL	WL	Comply
#2-10	Red enameled wire	WL	WL	WL	WL	WL	Comply
#2-11	Blue enameled wire	WL	WL	WL	WL	WL	Comply
#2-12	Golden enameled	WL	WL	WL	WL	WL	Comply

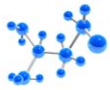


<b>Testing Details</b>							
		<b>Pb</b>	<b>Hg</b>	<b>Cd</b>	<b>Cr</b>	<b>Br</b>	<b>Result</b>
<b>No.</b>	<b>Parts Description</b>	≤700ppm*	≤700ppm*	≤70ppm*	≤700ppm*	≤300ppm*	
	wire						
#2-13	White cotton thread	WL	WL	WL	WL	WL	Comply
#2-14	Silvery metal screw	WL	WL	WL	WL	N.A	Comply
#2-15	White label of speaker	WL	WL	WL	WL	WL	Comply
#2-16	Black sponge of speaker	WL	WL	WL	WL	WL	Comply
#2-17	Black plastic frame of speaker	WL	WL	WL	WL	WL	Comply
#2-18	Transparent plastic film with red metal of speaker	WL	WL	WL	WL	WL	Comply
#2-19	Silvery megnet of speaker	WL	WL	WL	WL	N.A	Comply
#2-20	PCB with solidering tin of speaker	WL	WL	WL	WL	WL	Comply
#2-21	Double adhesive tape of speaker	WL	WL	WL	WL	WL	Comply
#2-22	White thread of speaker	WL	WL	WL	WL	WL	Comply
#2-23	Transparent soft rubber	WL	WL	WL	WL	WL	Comply
#2-24	Silvery metal frame	WL	WL	WL	WL	N.A	Comply
#2-25	White plastic with multi-color printing	WL	WL	WL	WL	WL	Comply
#2-26	White plastic	WL	WL	WL	WL	WL	Comply
#2-27	Silvery metal frame	WL	WL	WL	WL	N.A	Comply
#2-28	White soft rubber with multi-color pringing	WL	WL	WL	WL	WL	Comply
#3-1	Black sponge	WL	WL	WL	WL	WL	Comply
#3-2	Silvery metal screw	WL	WL	WL	WL	N.A	Comply
#3-3	Black spone	WL	WL	WL	WL	WL	Comply
#3-4	Double adhesive tape	WL	WL	WL	WL	WL	Comply
#3-5	White plastic	WL	WL	WL	WL	WL	Comply
#3-6	Silvery metal frame	WL	WL	WL	WL	N.A	Comply
#3-7	White plastic	WL	WL	WL	WL	WL	Comply
#3-8	Red plastic	WL	WL	WL	WL	WL	Comply



**Testing Details**

		<b>Pb</b>	<b>Hg</b>	<b>Cd</b>	<b>Cr</b>	<b>Br</b>	<b>Result</b>
<b>No.</b>	<b>Parts Description</b>	≤700ppm*	≤700ppm*	≤70ppm*	≤700ppm*	≤300ppm*	
#3-9	White plastic of speaker	WL	WL	WL	WL	WL	Comply
#3-10	Transparent plastic film with red metal	WL	WL	WL	WL	WL	Comply
#3-11	Black plastic of speaker	WL	WL	WL	WL	WL	Comply
#3-12	Silvery magnet of speaker	WL	WL	WL	WL	N.A	Comply
#3-13	PCB with soldering tin of speaker	WL	WL	WL	WL	WL	Comply
#3-14	Red enameled wire	WL	WL	WL	WL	WL	Comply
#3-15	Blue enameled wire	WL	WL	WL	WL	WL	Comply
#3-16	Golden enameled wire	WL	WL	WL	WL	WL	Comply
#3-17	White cotton thread	WL	WL	WL	WL	WL	Comply
#3-18	Red plastic of wire	WL	WL	WL	WL	WL	Comply
#3-19	Golden metal plug	WL	WL	WL	WL	N.A	Comply
#3-20	Black plastic of pug	WL	WL	WL	WL	WL	Comply
#4-1	Golden metal plug	WL	WL	WL	WL	N.A	Comply
#4-2	Black plastic of plug	WL	WL	WL	WL	WL	Comply
#4-3	White soft rubber	WL	WL	WL	WL	WL	Comply
#4-4	White plastic of wire	WL	WL	WL	WL	WL	Comply
#4-5	Red enameled wire	WL	WL	WL	WL	WL	Comply
#4-6	Blue enameled wire	WL	WL	WL	WL	WL	Comply
#4-7	Golden enameled wire	WL	WL	WL	WL	WL	Comply
#4-8	White cotton thread	WL	WL	WL	WL	WL	Comply
#4-9	Yellow plastic with white printing	WL	WL	WL	WL	WL	Comply
#4-10	White soft rubber of earplugs	WL	WL	WL	WL	WL	Comply
#4-11	White inner of earplugs	WL	WL	WL	WL	WL	Comply
#4-12	Gray sponge of earplugs	WL	WL	WL	WL	WL	Comply
#4-13	Black sponge	WL	WL	WL	WL	WL	Comply
#4-14	Silvery metal screw with black coating	WL	WL	WL	WL	N.A	Comply
#4-15	Silvery metal screw	WL	WL	WL	WL	N.A	Comply



**Testing Details**

		<b>Pb</b>	<b>Hg</b>	<b>Cd</b>	<b>Cr</b>	<b>Br</b>	<b>Result</b>
<b>No.</b>	<b>Parts Description</b>	≤700ppm*	≤700ppm*	≤70ppm*	≤700ppm*	≤300ppm*	
#4-16	Black plastic frame	WL	WL	WL	WL	WL	Comply
#4-17	Adhesive tape	WL	WL	WL	WL	WL	Comply
#4-18	Transparent plastic film of speaker	WL	WL	WL	WL	WL	Comply
#4-19	Red metal of speaker	WL	WL	WL	WL	N.A	Comply
#4-20	Silvery magnet of speaker	WL	WL	WL	WL	N.A	Comply
#4-21	PCB with soldering tin	WL	WL	WL	WL	WL	Comply
#4-22	Black fiber tube	WL	WL	WL	WL	WL	Comply
#4-23	White sponge	WL	WL	WL	WL	WL	Comply
#4-24	Black soft plastic with black inner	WL	WL	WL	WL	WL	Comply
#4-25	Black sponge	WL	WL	WL	WL	WL	Comply
#4-26	Black plastic frame	WL	WL	WL	WL	WL	Comply
#4-27	Silvery metal frame	WL	WL	WL	WL	N.A	Comply
#5-1	Golden metal plug	WL	WL	WL	WL	N.A	Comply
#5-2	Black plastic of plug	WL	WL	WL	WL	WL	Comply
#5-3	White soft plastic	WL	WL	WL	WL	WL	Comply
#5-4	White plastic of wire	WL	WL	WL	WL	WL	Comply
#5-5	Red enameled wire	WL	WL	WL	WL	WL	Comply
#5-6	Blue enameled wire	WL	WL	WL	WL	WL	Comply
#5-7	Golden enameled wire	WL	WL	WL	WL	WL	Comply
#5-8	White cotton thread	WL	WL	WL	WL	WL	Comply
#5-9	Orange soft plastic	WL	WL	WL	WL	WL	Comply
#5-10	White inner	WL	WL	WL	WL	WL	Comply
#5-11	Orange thread	WL	WL	WL	WL	WL	Comply
#5-12	Black soft plastic	WL	WL	WL	WL	WL	Comply
#5-13	Gray sponge	WL	WL	WL	WL	WL	Comply
#5-14	Black sponge	WL	WL	WL	WL	WL	Comply
#5-15	Silvery metal screw with black coating	WL	WL	WL	WL	N.A	Comply
#5-16	Transparent plastic film of speaker	WL	WL	WL	WL	WL	Comply
#5-17	Red metal of speaker	WL	WL	WL	WL	N.A	Comply
#5-18	Black plastic frame	WL	WL	WL	WL	WL	Comply

Testing Details							
		Pb	Hg	Cd	Cr	Br	Result
No.	Parts Description	≤700ppm*	≤700ppm*	≤70ppm*	≤700ppm*	≤300ppm*	
#5-19	Silvery metal magnet of speaker	WL	WL	WL	WL	N.A	Comply
#5-20	PCB with soldering tin of speaker	WL	WL	WL	WL	WL	Comply
#5-21	Gray plastic	WL	WL	WL	WL	WL	Comply
#5-22	Silvery metal frame	WL	WL	WL	WL	N.A	Comply
#5-23	Orange plastic	WL	WL	WL	WL	WL	Comply
#5-24	Black metal frame	WL	WL	WL	WL	N.A	Comply
#5-25	Silvery metal screw	WL	WL	WL	WL	N.A	Comply
#5-26	Gray soft rubber	WL	WL	WL	WL	WL	Comply
#5-27	Gray thread	WL	WL	WL	WL	WL	Comply
#5-28	White inner	WL	WL	WL	WL	WL	Comply
#5-29	Gray sponge	WL	WL	WL	WL	WL	Comply
#5-30	White sponge	WL	WL	WL	WL	WL	Comply
#5-31	Transparent plastic	WL	WL	WL	WL	WL	Comply
#6-1	Golden metal plug	WL	WL	WL	WL	N.A	Comply
#6-2	Black plastic of plug	WL	WL	WL	WL	WL	Comply
#6-3	Black soft plastic of wire	WL	WL	WL	WL	WL	Comply
#6-4	Black fiber tube	WL	WL	WL	WL	WL	Comply
#6-5	Red enameled wire	WL	WL	WL	WL	WL	Comply
#6-6	Blue enameled wire	WL	WL	WL	WL	WL	Comply
#6-7	Golden enameled wire	WL	WL	WL	WL	WL	Comply
#6-8	White cotton thread	WL	WL	WL	WL	WL	Comply
#6-9	Black soft rubber of earplug	WL	WL	WL	WL	WL	Comply
#6-10	Black inner of earplug	WL	WL	WL	WL	WL	Comply
#6-11	Beige inner of earplug	WL	WL	WL	WL	WL	Comply
#6-12	Black sponge of speaker	WL	WL	WL	WL	WL	Comply
#6-13	Transparent plastic film of speaker	WL	WL	WL	WL	WL	Comply
#6-14	Red metal of speaker	WL	WL	WL	WL	N.A	Comply
#6-15	Silvery metal magnet of speaker	WL	WL	WL	WL	N.A	Comply

Testing Details							
		Pb	Hg	Cd	Cr	Br	Result
No.	Parts Description	≤700ppm*	≤700ppm*	≤70ppm*	≤700ppm*	≤300ppm*	
#6-16	PCB with soldering tin of speaker	WL	WL	WL	WL	WL	Comply
#6-17	Golden metal mesh	WL	WL	WL	WL	N.A	Comply
#6-18	Transparent soft plastic set	WL	WL	WL	WL	WL	Comply
#6-19	Golden metal frame	WL	WL	WL	WL	N.A	Comply
#6-20	Black plastic	WL	WL	WL	WL	WL	Comply
#6-21	Golden metal	WL	WL	WL	WL	N.A	Comply
#6-22	Black soft plastic	WL	WL	WL	WL	WL	Comply
#6-23	Black thread	WL	WL	WL	WL	WL	Comply
#6-24	Black inner	WL	WL	WL	WL	WL	Comply
#6-25	Transparent plastic frame	WL	WL	WL	WL	WL	Comply
#6-26	Black metal frame	WL	WL	WL	WL	N.A	Comply
#6-27	Black plastic of wire	WL	WL	WL	WL	WL	Comply

**Caption:**

WL = Within Limit

BL = Beyond Limit

EXE = Exemption

N.A = Not Applicable

INC = Inconclusive

**Notes:**

\* Limit recommended by IEC concerning RoHS directive

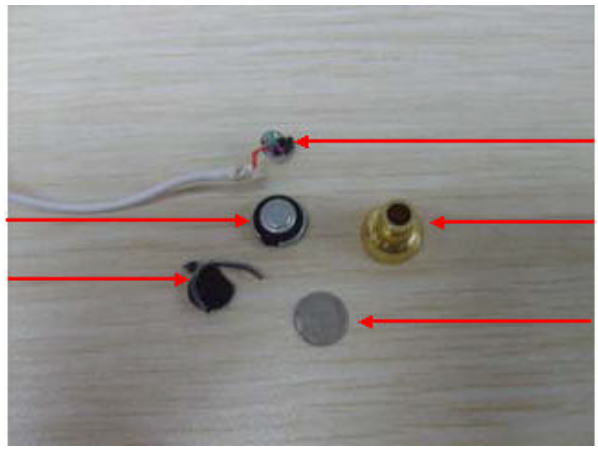
\*1Lead content of ceramic is exempted.

**Product Pictures**

#1 pic



1



5

6

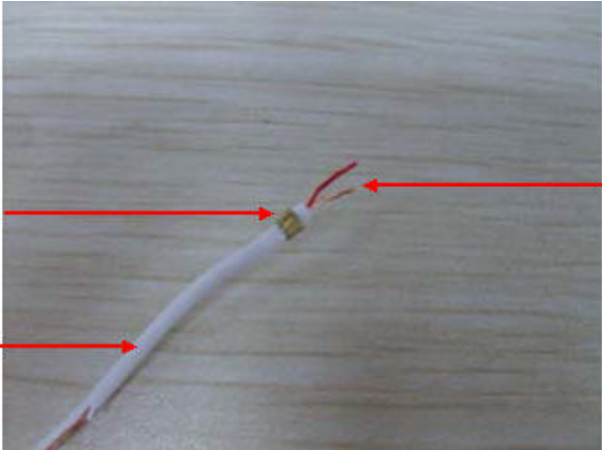
4

7

8

2

3



9

10

11

14



15

16

#2 pic

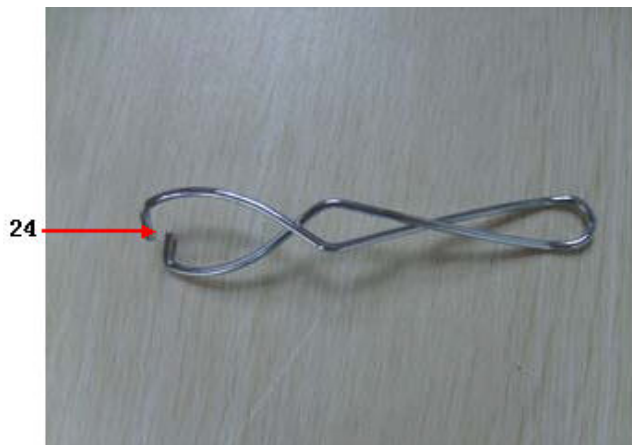
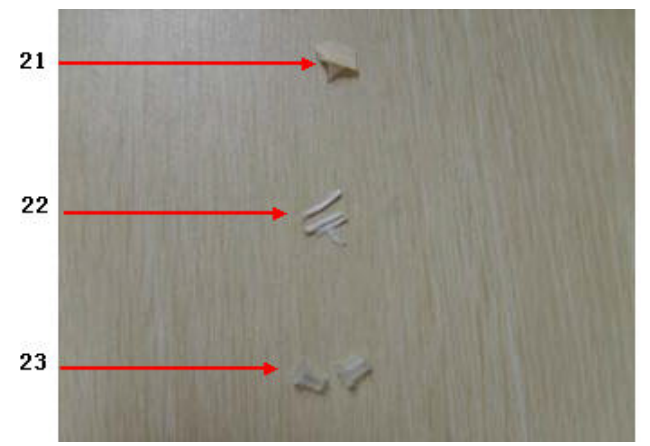
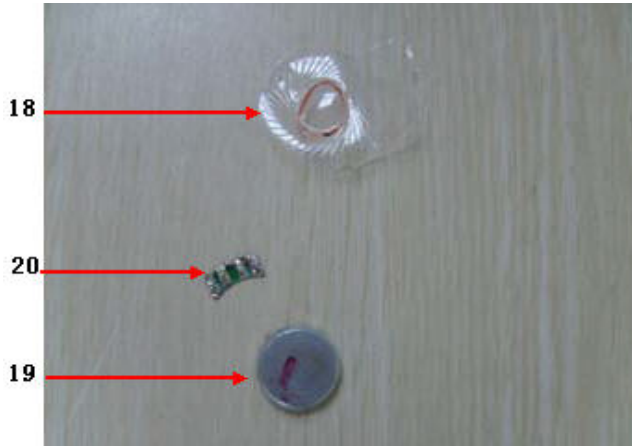
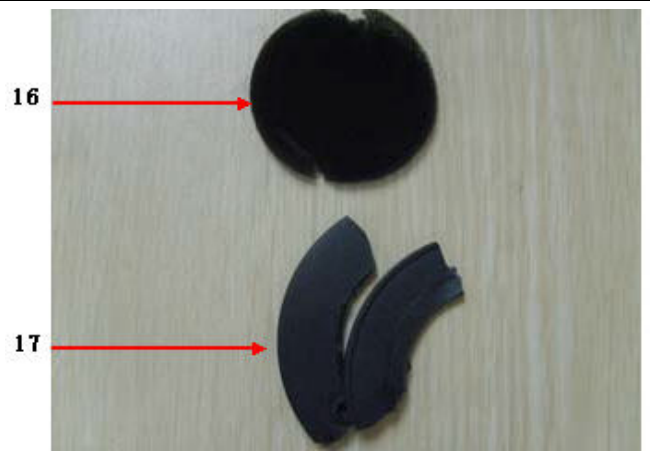
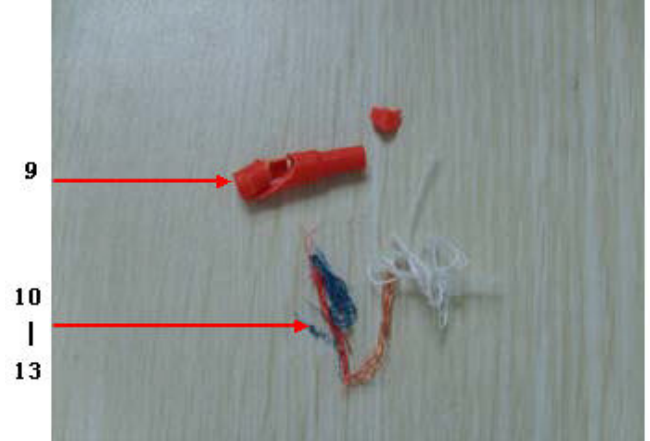


1

5

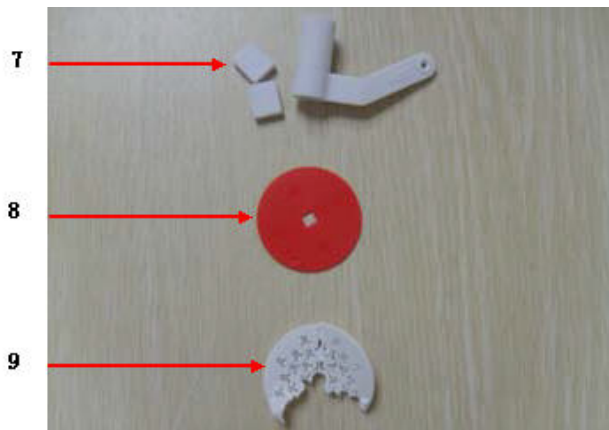
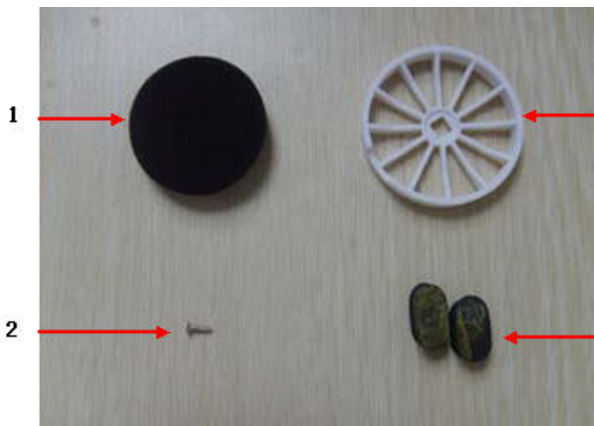


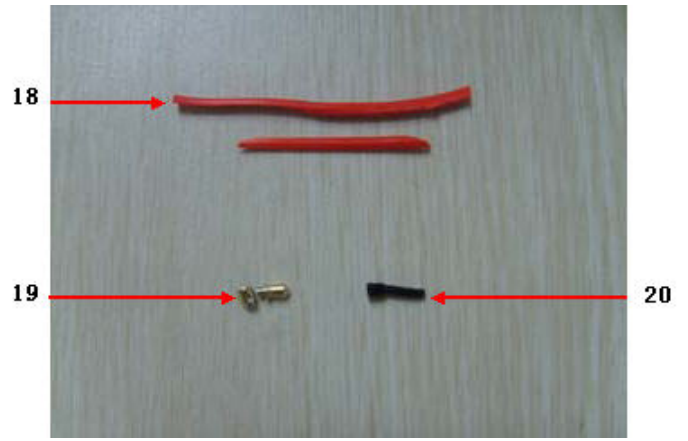
6



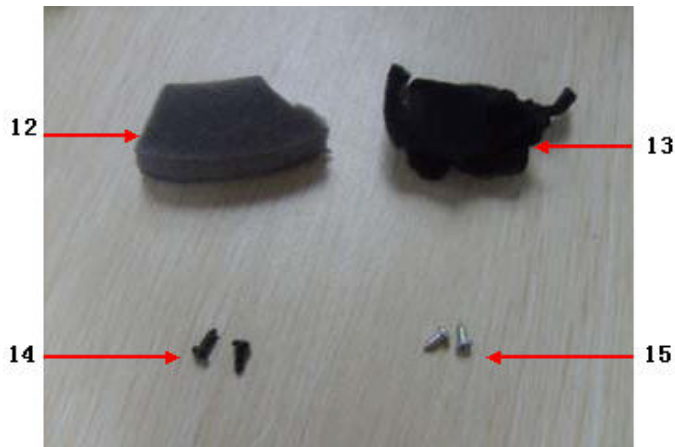
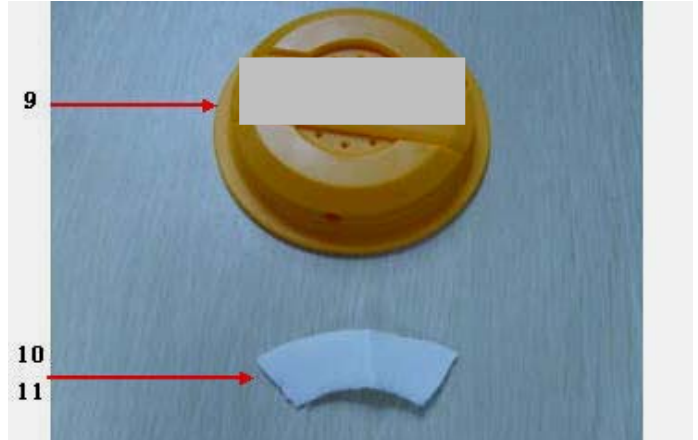


#3 pic



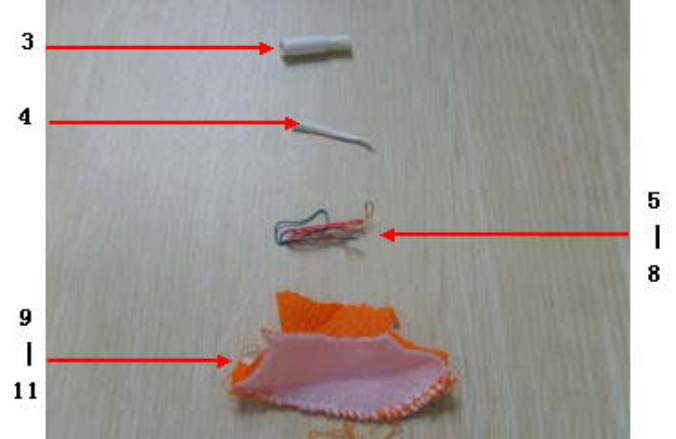
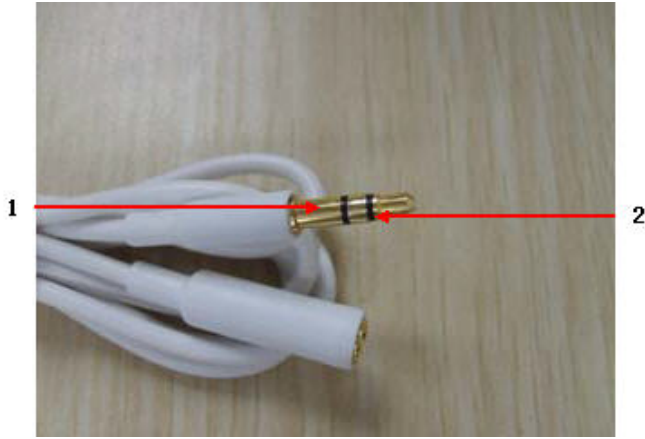


#4 pic



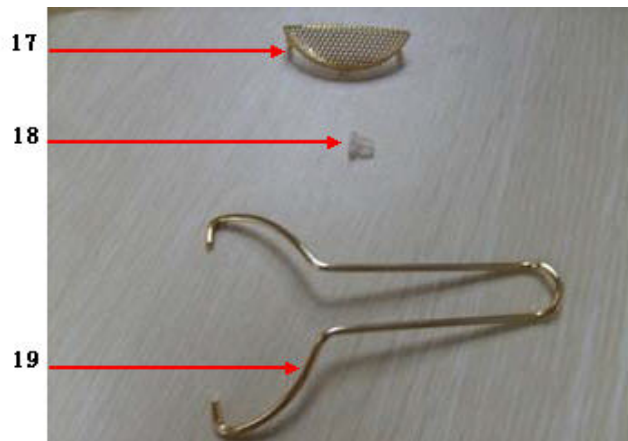
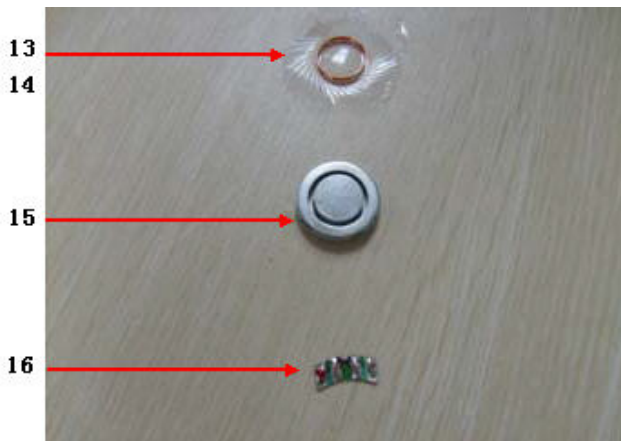
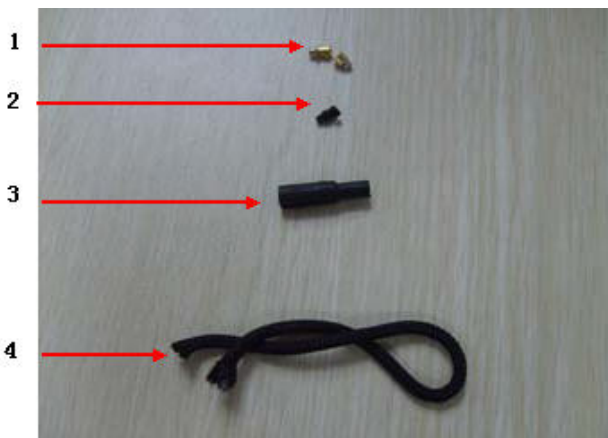


#5 pic





#6 pic





**End of the Report**